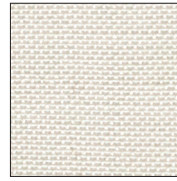


EVT LIGHT SCENO POLY

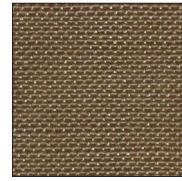
TELA LEGGERA / SHEER MUSLIN



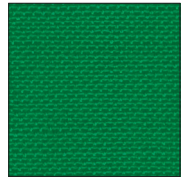
01 · Bianco / White



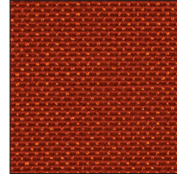
21 · Beige



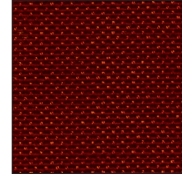
28 · Nocciola / Hazelnut



56 · Verde / Green



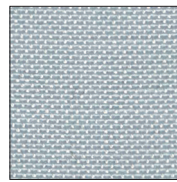
31 · Rosso / Red



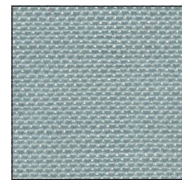
37 · Bordeaux



65 · Blu / Blue



91 · Grigio chiaro / Light grey





93 · Grigio / Grey



99 · Nero / Black

CODICE CODE	FORMATO FORMAT	LARGHEZZA WIDTH	LUNGHEZZA LENGTH	COMPOSIZIONE COMPOSITION	PESO WEIGHT
EVT340P	Piegato a metà e arrotolato <i>Folded in half and rolled</i>	340 cm	± 50 m	100% Trevira CS	130 g/m ²

REAZIONE AL FUOCO <i>REACTION TO FIRE</i>		IGNIFUGO PERMANENTE È considerato permanentemente ignifugo per il suo intero ciclo di vita, anche se venisse bagnato o lavato. Il tessuto resiste al lavaggio in acqua, tuttavia si consiglia solo il lavaggio a secco professionale.	IFR - INHERENTLY FLAME RETARDANT <i>It is considered to be permanently flame retardant for its lifetime, even if wet or washed. The fabric will withstand wet cleaning, but we suggest professional dry cleaning only.</i>
CERTIFICATI DI IGNIFUGAZIONE <i>FR CERTIFICATIONS</i>		EN 13773 classe 1 UNI 9177 classe 1	EN 13773 class 1 UNI 9177 class 1
DATI FISICO-MECCANICI <i>PHYSICAL MECHANICAL DATA</i>		· EN ISO 105-B02 Solidità del colore alla luce artificiale: valore 6 · EN ISO 105-C06 Solidità del colore al lavaggio: valore 4	· EN ISO 105-B02 Colour fastness to artificial light: rate 6 · EN ISO 105-C06 Colour fastness to laundering: rate 4
DISPONIBILITÀ <i>AVAILABILITY</i>		· A metro · Rotoli interi · Realizzazioni su misura	· By the metre · Full rolls · Custom-made creations
ISTRUZIONI PER IL LAVAGGIO <i>CARE INSTRUCTIONS</i>	