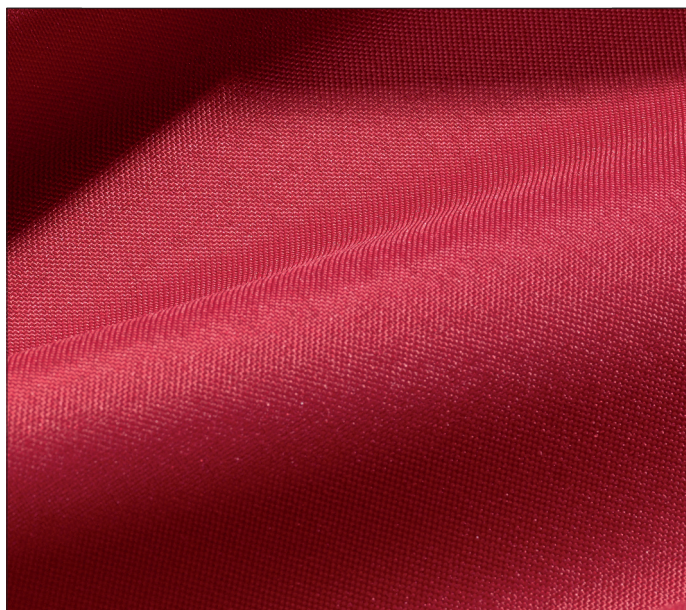



HSV TREVI

SATIN IN POLIESTERE / POLYESTER SATIN



22 - Rosso / Red







CODICE CODE	FORMATO FORMAT	LARGHEZZA WIDTH	LUNGHEZZA LENGTH	COMPOSIZIONE COMPOSITION	PESO WEIGHT
HSV300P	Piegato a metà e arrotolato <i>Folded in half and rolled-up</i>	300 cm	± 40 m	100% Poliestere <i>100% Polyester</i>	115 g/m ²

REAZIONE AL FUOCO REACTION TO FIRE	IGNIFUGO PERMANENTE	IFR - INHERENTLY FLAME RETARDANT
	È considerato permanentemente ignifugo per il suo intero ciclo di vita, anche se venisse bagnato o lavato. Il tessuto resiste al lavaggio in acqua, tuttavia si consiglia solo il lavaggio a secco professionale.	<i>It is considered to be permanently flame retardant for its lifetime, even if wet or washed. The fabric will withstand wet cleaning, but we suggest professional dry cleaning only.</i>

CERTIFICATI DI IGNIFUGAZIONE FR CERTIFICATIONS	EN 13501-1 B s1 d0 UNI 9177 classe 1 Certificazione IMO Res. A471 (XIII)	EN 13501-1 B s1 d0 UNI 9177 class 1 IMO Certification Res. A471 (XIII)
		

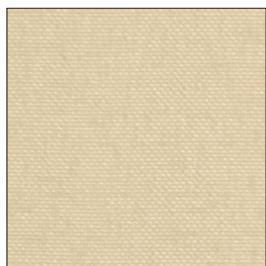
DATI FISICO-MECCANICI PHYSICAL MECHANICAL DATA	EN ISO 105-B02 Solidità del colore alla luce artificiale: valore 5	EN ISO 105-C06 Solidità del colore al lavaggio: valore 5	EN ISO 12945-2 Resistenza al pilling: valore 5	EN ISO 12947-2 Resistenza all'abrasione: 60.000 cicli	EN ISO 13934-1 Resistenza alla trazione: ordito 630 N, trama 950 N
	<i>EN ISO 105-B02 Colour fastness to artificial light: rate 5</i>	<i>EN ISO 105-C06 Colour fastness to laundering: rate 5</i>	<i>EN ISO 12945-2 Pilling resistance: rate 5</i>	<i>EN ISO 12947-2 Abrasion resistance: 60,000 cycles</i>	<i>EN ISO 13934-1 Tensile strength: warp 630 N, weft 950 N</i>

DISPONIBILITÀ AVAILABILITY	A metro	By the metre
	<ul style="list-style-type: none"> · Pezze intere · Realizzazioni su misura 	<ul style="list-style-type: none"> · Full pieces · Custom-made creations

ISTRUZIONI PER IL LAVAGGIO CARE INSTRUCTIONS						

HSV TREVI

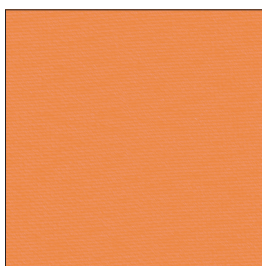
SATIN IN POLIESTERE / *POLYESTER SATIN*



02 · Beige



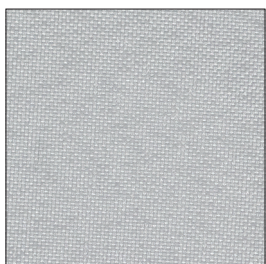
03 · Avorio / *Ivory*



15 · Arancione / *Orange*



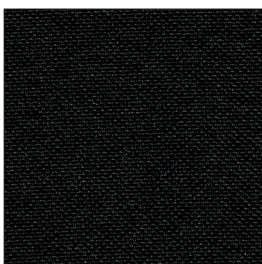
22 · Rosso / *Red*



91 · Grigio chiaro / *Light grey*



95 · Grigio scuro / *Dark grey*



99 · Nero / *Black*